

CARTOGRAPHY IN CREATIVE CLOUD

KAREN ZEEB
CAPSTONE • MSGT 2019

ADDING DATA

IN THE ARCGIS PRO ONLINE PORTAL

From the catalogue pane, select Portal

There are two online portals - the all portal



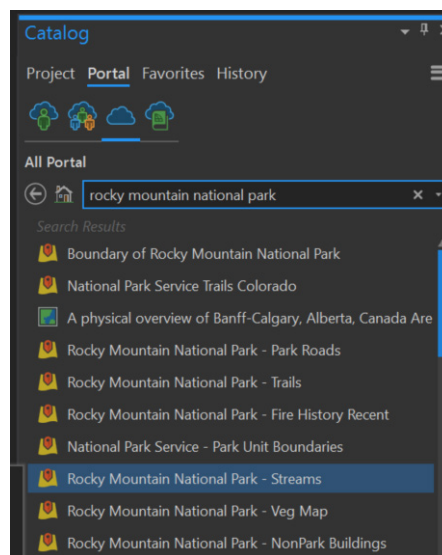
- the living atlas



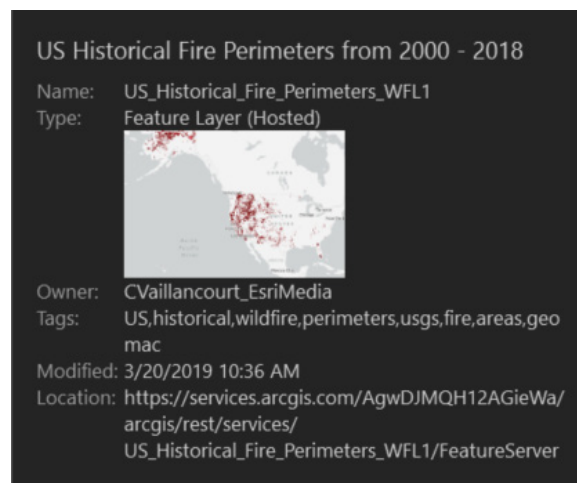
Type in search parameters
only layers with this icon



can be added to your map
(right click>add to map)



See a preview of the data
and metadata



PROJECT DATA

Adding other types
of project data is also
done from the
catalogue pane

PROJECT

This is data located
local on your
computer. In your
project database,
right click and add
folder connection

PORTAL

You can also add data
from your personal
online account, or
your organization's
account

FAVORITES

Project favorites is
a collection of fre-
quently-used folder,
database, and server
connections

HISTORY

Choose from recently
used database items

CARTOGRAPHY IN CREATIVE CLOUD

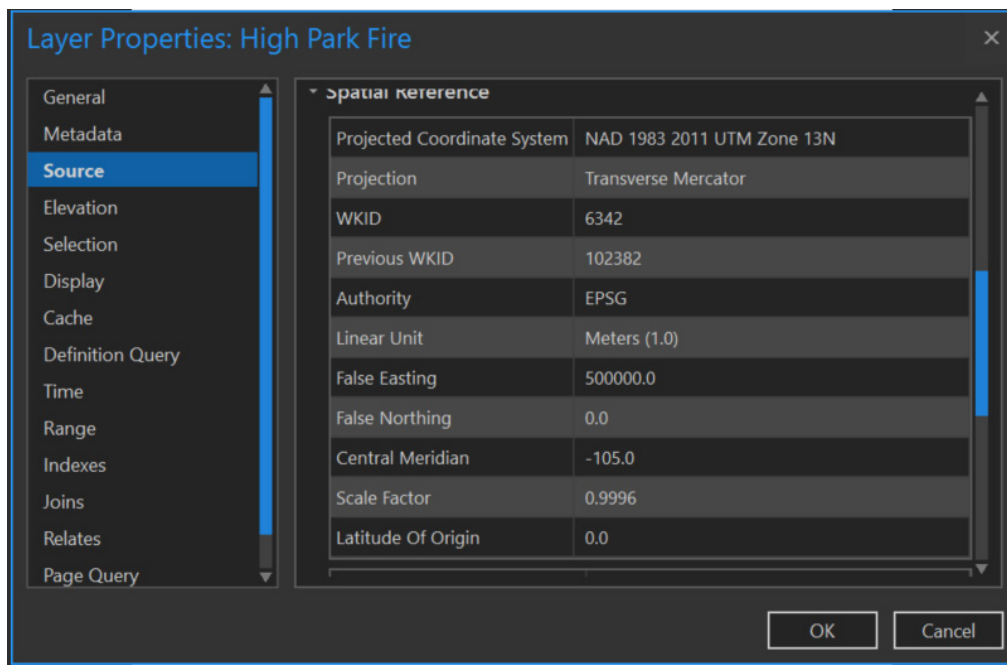
KAREN ZEEB
CAPSTONE • MSGT 2019

SET YOUR PROJECTION

IN ARCGIS PRO

Right-click the data frame name and choose Properties to bring up the Data Frame Properties dialog box.

Click the Coordinate System tab and navigate to the desired coordinate system for your map display



TO CONSIDER

For web maps, Mercator is the popular choice but be aware that this projection is widely considered inappropriate for many kinds of thematic mapping or anything larger than local areas. If you are making choropleth or dot density maps, look for an equal-area projection.

DISTORTION

What specific map property do you need to preserve?

AREA

Maps of density demand equal area projections

FORM

Conformal projections are often good for general-purpose reference mapping, where we want to keep places looking recognizable and familiar

DISTANCE

If you'd like to show, visually, how far one thing is from another, you're going to need to preserve distance

DIRECTION

Also helpful for navigation

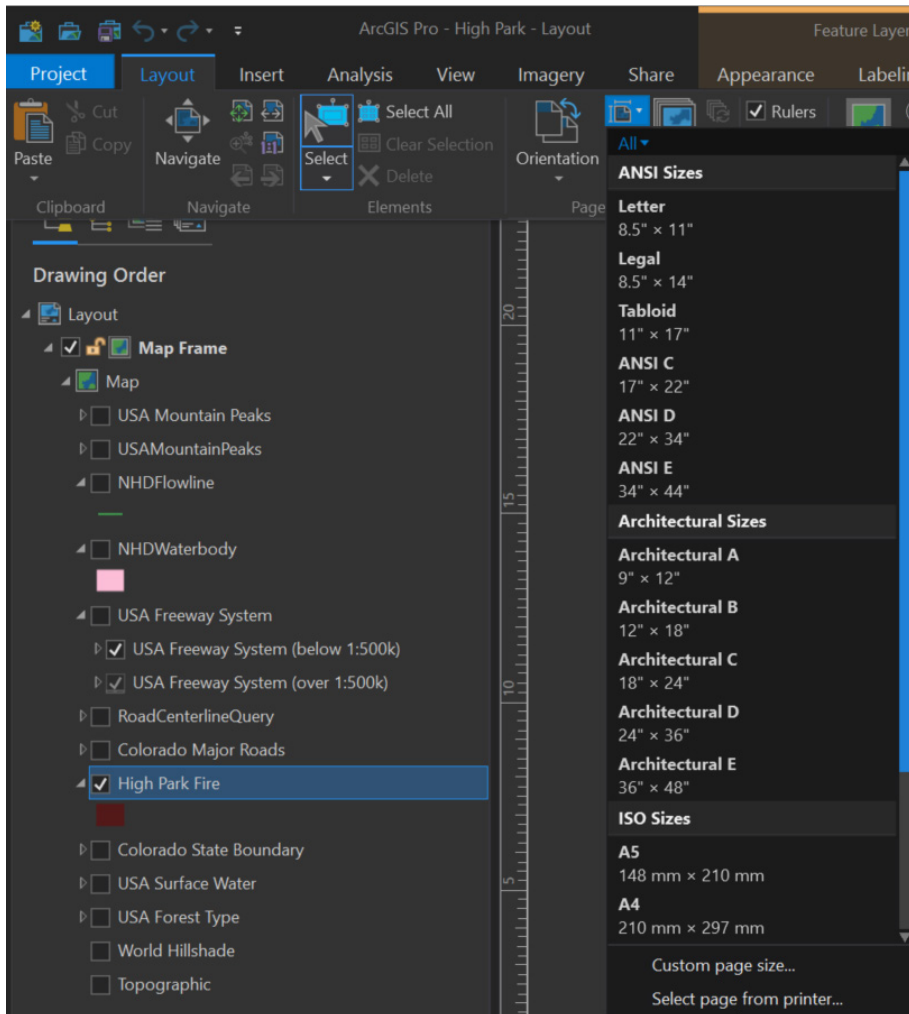
CARTOGRAPHY IN CREATIVE CLOUD

KAREN ZEEB
CAPSTONE • MSGT 2019

LAYOUT

IN ARCGIS PRO

To create a layout, select insert from the map ribbon and click layout
Choose a default size or input your own



Select New Map Frame and choose your map from the pop-up

A cross-hair cursor will appear on your blank layout and you must draw the area where your map is to appear.

TO CONSIDER

Make sure your map is set to the exact size of your final map. This assures proper resolution for your final product.

A WORD ABOUT RESOLUTION

Resolution is the pixel dimensions of a graphic, the dots-per-inch (dpi).

Higher resolution equals larger file size, so use only what you need.

FOR PRINT

High quality printing requires at least 300 dpi

FOR WEB

Web graphics require a resolution of 72 dpi.

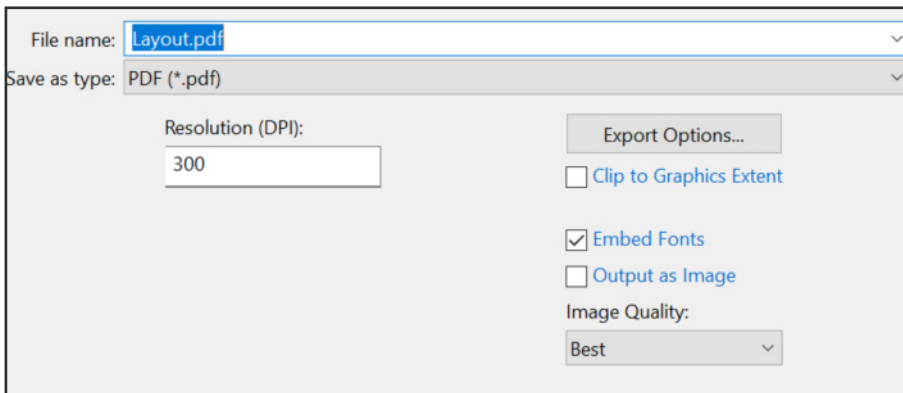
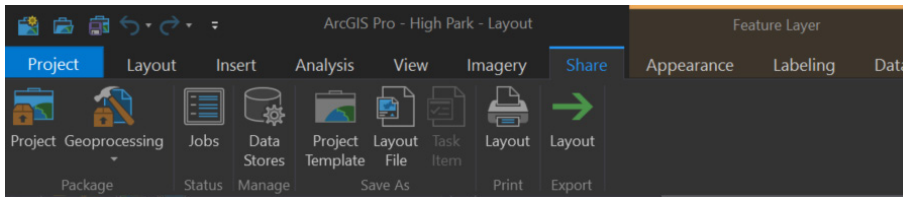
CARTOGRAPHY IN CREATIVE CLOUD

KAREN ZEEB
CAPSTONE • MSGT 2019

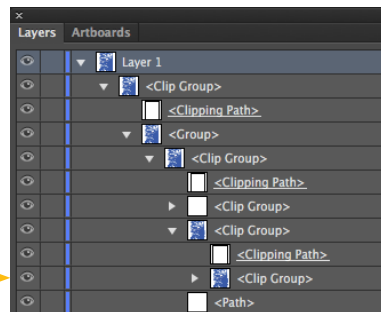
EXPORT AND OPEN

FROM ARCGIS TO ADOBE CREATIVE CLOUD

Export the map by selecting share from the layout view, name and set the resolution.



After opening the pdf in Adobe Illustrator, there are myriad clipping paths that need to be removed. The easiest way to do this is to open every group until the actual graphics are located - drag only the graphic to a new layer and delete everything else. →



For the High Park Fire map, the layers were exported and opened separately, using the fire boundary for alignment. This proved faster for both the exporting process and cleaning up layers in Illustrator.

MAKE IT EASIER
ON YOURSELF
WITH:

LAYER STYLES

Each feature type needs its own layer to uniformly style them as a group.

Use the appearance window to style your features, save it as a graphic style and apply it to the layer. Not just user-friendly, its the only way to connect any disconnected paths (i.e. roads)

GLOBAL COLOR

When selecting color, check global color so that hue changes in every instance of its use.

NOTE ON COLOR
CMYK for print
RGB for web
HEX for programmers

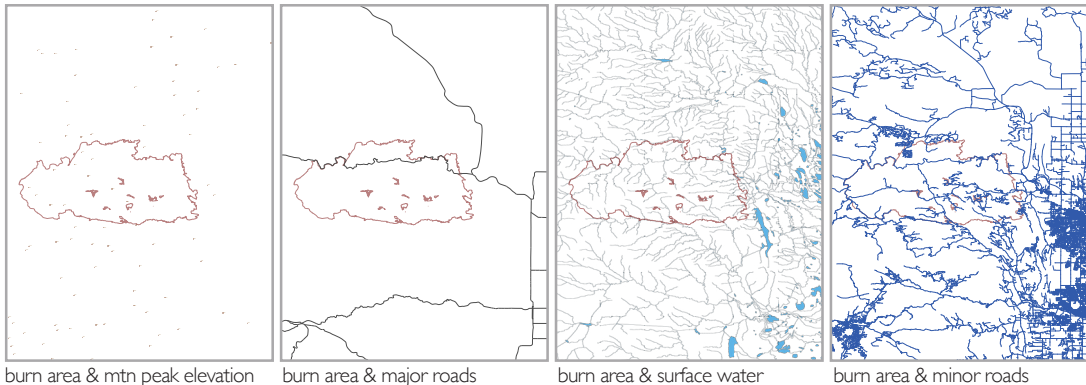
CARTOGRAPHY IN CREATIVE CLOUD

KAREN ZEEB
CAPSTONE • MSGT 2019

VECTOR GRAPHICS

ADOBE ILLUSTRATOR

Vector graphics are the lines and polygons of GIS. These features maintain their sharpness when resized, and save as smaller files.



TRANSPARENCIES

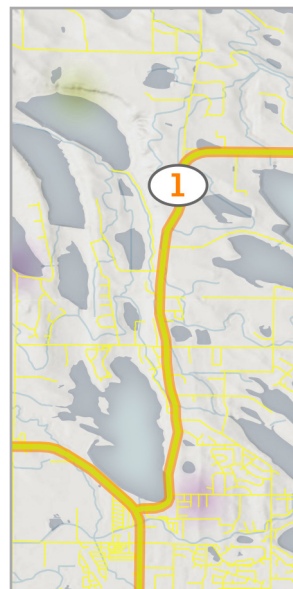
There are multiple options for applying transparencies that create visual hierarchy for the vector elements of your map.

STROKE

In the appearance pane, select apply stroke - this adds an additional stroke that can differentiate feature types or enhance the look of a line. This effect is used most often on highways

GLOW

The inner-glow effects is used on the water bodies of the High Park Fire map. The creates a gradient at the edge of a polygon and when used on water, gives an appearance of depth



GET TO KNOW THESE TOOLS:

PEN TOOL

The pen tool is an invaluable asset in Illustrator. Used to draw lines, curves, connect the disconnected, and trace graphics.

It takes some practice to create vertices with desired arcs but once you master the pen tool, you can draw (and re-draw rasters) with ease.

IMAGE TRACE

This function is used to make vector graphics (usually from raster) more manageable.

COLOR DROPPER

This tool allows for color matching and saving color swatches of imported graphics. Great for color consistency

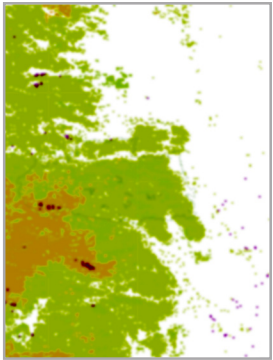
CARTOGRAPHY IN CREATIVE CLOUD

KAREN ZEEB
CAPSTONE • MSGT 2019

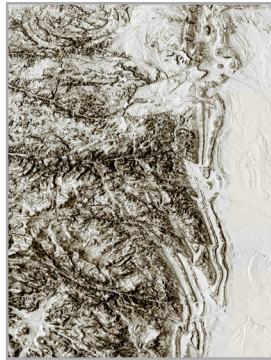
RASTER GRAPHICS

ADOBE PHOTOSHOP

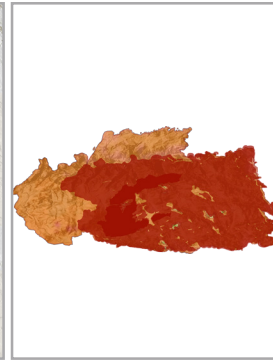
Raster graphics are the pixel graphics of GIS. Resolution dependent, these should only be used background layers.



forest type color adjust & blur



hillshade at full opacity



burn area w. hillshade



burn area w. burnt edge

TRANSPARENCIES

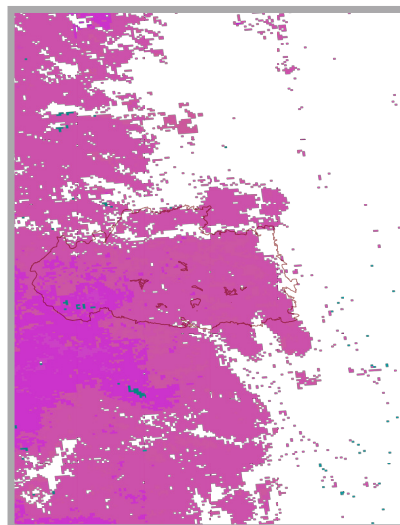
Transparency adjustments can be applied to many layers, allowing elements levels of visibility that combine for visual hierarchy.

COLOR ADJUSTMENT

For the High Park Fire map, color adjustment was done on the forest type layer. This function allows the entire layer to change together keeping the integrity of hue variations.

DESIGN EFFECTS

The burnt edge effect on the burn area layer that was created with a layer mask, large round paint brush, blur and the distortion effect of adding noise.



forest type before color adjustment

GET TO KNOW THESE TOOLS:

FILTER GALLERY

This gallery applies artistic filters to layers or elements of the map, including painting, drawing or poster effects.

MASKING

Masking is important when you need to apply an effect to specific elements or areas, not the entire layer. Important in the burnt edge effect.

STYLE GALLERY

Here you can add effects to layers or layer elements such as glow, drop shadow, distortions, blur or sharpen

PAINTBRUSH

Many effects are executed with the variety of paintbrush options of size and hardness.

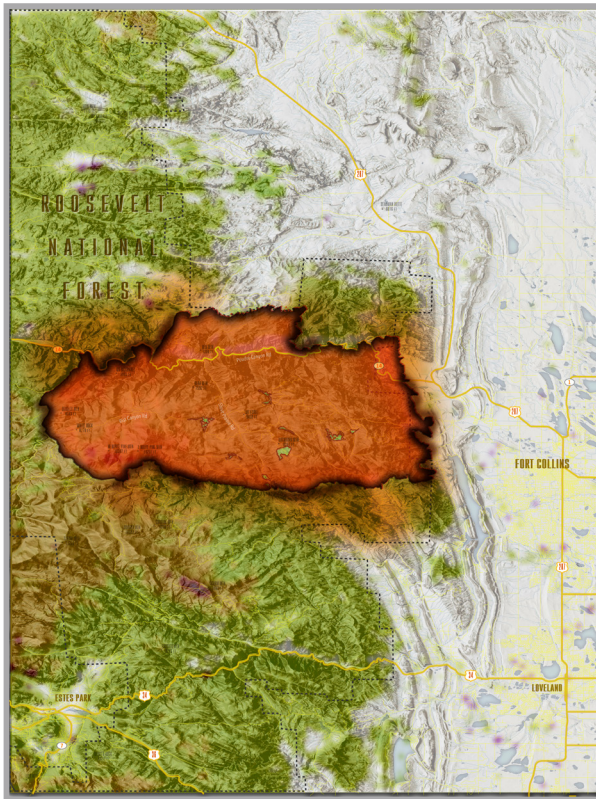
CARTOGRAPHY IN CREATIVE CLOUD

KAREN ZEEB
CAPSTONE • MSGT 2019

PUTTING IT TOGETHER

ASSEMBLING LAYERS IN ILLUSTRATOR & PHOTOSHOP

Vector and raster layers put together in Adobe Photoshop.



PHOTOSHOP OR ILLUSTRATOR?

Putting together your adjusted layers can be done in either software, but Illustrator is usually preferred. This map was assembled in Photoshop simply because the raster layer effects are the main focus of the map.

FILE FORMATS

Options to save or export to myriad file formats is a key function in Creative Cloud. See sidebar for tips on best use of popular formats.

A WORD ON FILE FORMATS

JPG

Useful for print or web, important to remember the resolution for best use. (300 dpi for print; 72 dpi for web). Jpgs appear as a flattened file, showing the background in white.

PNG

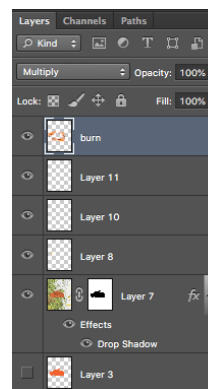
Portable network graphics are relatively new, and a great alternative to jpgs. Background appears as transparent.

AI

Adobe Illustrator vector file, used for professionally printing, and excellent for import into final layout software.

PDF

Portable document file is a good option for general use but can appear distorted when viewed on-screen



CARTOGRAPHY IN CREATIVE CLOUD

KAREN ZEEB
CAPSTONE • MSGT 2019

THE FINAL PRODUCT

CREATING A LAYOUT IN ADOBE INDESIGN

InDesign is the software used by professionals for design layout. The High Park Fire map was finalized by adding the text, title, and additional graphics.

(10) TENETS FOR SUCCESS:

- Find Your Focus
- Direct the Eye
- Scale and Hierarchy
- Balance
- Use Complimentary Elements
- Contrast
- Repeat Elements of Your Design
- White Space
- Alignment



POWER POINT

Many map layouts are prepared in Power Point, which has some similar basic operations - such as adding text boxes - but lacks advanced design functionality.

PRE-FLIGHT

For projects headed to professional printers, or for sharing files, the pre-flight function gathers and packages all the elements of your project into one folder.

- **VISUAL HIERARCHY**
- LAYOUT
 - The main focus of this map is the burn area, which is centered on the page, and its shape repeated in the fire progression graphic.
 - The burn effect draws attention and the map's intent is immediately understood.
- MAP ELEMENTS
 - Forest and hillshade provide a geographical reference to the map without distracting from the burn area.
- COLOR
 - Standard cartographic choices of green for natural areas and blue for water make the map easy to understand. The orange hue used for the burn area although muted, is naturally associated with fire.