

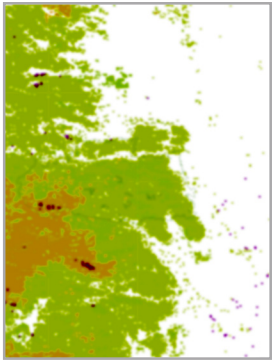
CARTOGRAPHY IN CREATIVE CLOUD

KAREN ZEEB
CAPSTONE • MSGT 2019

RASTER GRAPHICS

ADOBE PHOTOSHOP

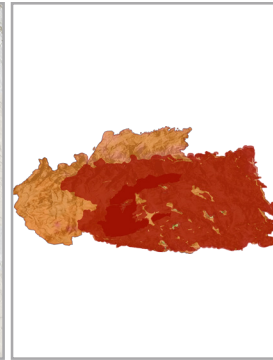
Raster graphics are the pixel graphics of GIS. Resolution dependent, these should only be used background layers.



forest type color adjust & blur



hillshade at full opacity



burn area w. hillshade



burn area w. burnt edge

TRANSPARENCIES

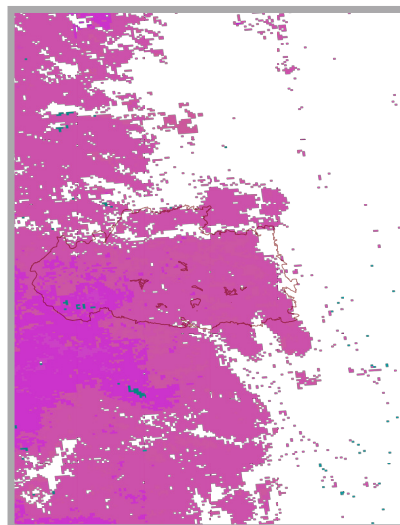
Transparency adjustments can be applied to many layers, allowing elements levels of visibility that combine for visual hierarchy.

COLOR ADJUSTMENT

For the High Park Fire map, color adjustment was done on the forest type layer. This function allows the entire layer to change together keeping the integrity of hue variations.

DESIGN EFFECTS

The burnt edge effect on the burn area layer that was created with a layer mask, large round paint brush, blur and the distortion effect of adding noise.



forest type before color adjustment

GET TO KNOW THESE TOOLS:

FILTER GALLERY

This gallery applies artistic filters to layers or elements of the map, including painting, drawing or poster effects.

MASKING

Masking is important when you need to apply an effect to specific elements or areas, not the entire layer. Important in the burnt edge effect.

STYLE GALLERY

Here you can add effects to layers or layer elements such as glow, drop shadow, distortions, blur or sharpen

PAINTBRUSH

Many effects are executed with the variety of paintbrush options of size and hardness.