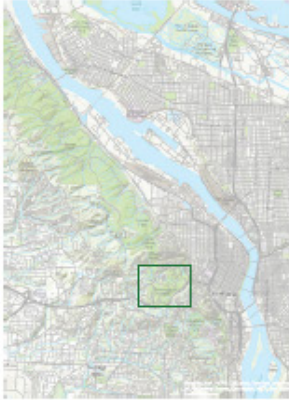


# Washington Park



Washington Park lies east of downtown Portland and directly to the north of US HWY 26 at Kingston Blvd. (exit 72).

Washington Park is home to The Oregon Zoo, Hoyt Arboretum and the Portland Children's Museum. It features Portland's Japan Gardens, The International Rose Test Garden and the World Forestry Center Discovery Museum. The park is accessible from BLAH avenue and maybe that freeway:

#### DIRECTIONS

From the south: from US HWY 26 take exit 72 (Kingston Blvd.) north into the park.  
 From the north: take Tichner Dr. off Burnside Rd. Turn right onto Kingston Blvd.  
 From the east: from Vista Ave. (23rd), head west on to Park Place.

#### REGULATIONS

The park is open daily 5am - 10pm. Park attractions hours vary seasonally. Pay to park lots are accessible near park attractions from 9am and a free shuttle that loops inside the park, running every fifteen minutes, is available 9am - 6pm (daily in the summer and weekends in May and Sep. - Oct.) Pets are allowed on leash.

#### LEGEND

|  |                            |
|--|----------------------------|
|  | Washington Park            |
|  | Major Road                 |
|  | Minor Road                 |
|  | Wildwood Trail             |
|  | Parking                    |
|  | Max Station                |
|  | Oregon Zoo                 |
|  | Rose Garden                |
|  | Forestry Museum            |
|  | Portland Children's Museum |

Steve Novick  
 Commissioner, City of Portland  
[www.portlandoregon.gov/coc](http://www.portlandoregon.gov/coc) 503.253.4622

MagnaTerra  
 CARTOGRAPHICS  
 MagnaTerra Cartographic  
 Mapmakers, Portland, Oregon  
[www.magnaterra.com](http://www.magnaterra.com) 503.253.8227

